



# THE GRADUATE RECORD

THE CATO COLLEGE OF EDUCATION RESEARCH AND GRADUATE EDUCATION NEWSLETTER

## CAROLINAS STEM TEACHING & LEARNING CONFERENCE

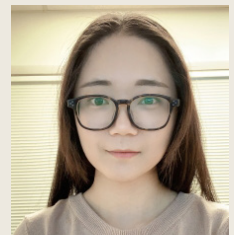
On January 2, 2026, the Center for Science, Technology, Engineering and Mathematics Education (CSTEM) hosted the annual Carolinas STEM Teaching & Learning Conference in the Cato College of Education. Over 170 K-12 STEM educators representing districts from across the state were in attendance. The event included 32 presentations on a variety of relevant and engaging topics (e.g., AI in STEM, Forces in Racing, Inquiry-Based Science), including a presenter who flew in from Gary, Indiana to present an Engineering Program for Elementary classrooms. There were also 16 exhibitors from across North Carolina (e.g., NASCAR Hall of Fame, Bio Rad Explorers, LEGO Education). Each year, the conference is sponsored via a grant from the Burroughs Wellcome Fund. John Bartlett (see picture), Vice President of Education at the Sullenberger Aviation Museum was the conference keynote speaker



JOHN BARTLETT

## FACULTY RESEARCH MENTORING PARTNERSHIP

Congratulations to Drs. Scarlett Zhang and Chuang Wang (Department of Educational Leadership) on their successful application to the Faculty Research Mentoring Program. Dr. Zhang will collaborate with her mentor, Dr. Wang, to develop and submit a National Science Foundation grant proposal focused on examining preparation pathways, professional development needs, and turnover patterns among computer science teachers in charter schools. Drs. Zhang and Wang form a strong and complementary research team.



SCARLETT ZHANG



HUANG WANG

## DISCOVER FUNDING OPPORTUNITIES WITH THE NC COLLABORATORY - FACULTY INFORMATION SESSION (FEB. 26)

The **North Carolina Collaboratory** is a state-funded research agency created by the NC General Assembly in 2016 to support research that delivers practical, actionable information for state and local governments and the communities they serve. The Collaboratory funds research across a wide range of pressing issues—from opioid remediation and K-12 education to water quality and natural disasters.

On **February 26, 1-2 PM (via Zoom)**, **Jeni Corn, Ph.D., Research Director for Social Sciences at the NC Collaboratory**, will lead an online information session for **UNC Charlotte faculty**. Dr. Corn oversees the Collaboratory's social sciences portfolio statewide, including **K-12 education, child welfare,**



JENI CORN

**criminal justice and mental health reform, economics, public health, psychology, political science, and workforce research.** Her extensive background includes leadership roles at the NC Department of Public Instruction, myFutureNC, and the Friday Institute at NC State, with deep experience conducting applied research in North Carolina schools and communities.

During the session, Dr. Corn will introduce the NC Collaboratory, discuss **current research priorities and areas of funding interest**, highlight **potential and upcoming funding opportunities**, and host a **Q&A**. K-12 priorities include topics such as early literacy, chronic absenteeism, educator recruitment and retention, student mental health, AI and cell phone use in schools, school safety, funding models, and disaster recovery.

**Attendance requires registration.**

[Please RSVP here.](#)

## OFFICE OF RESEARCH SERVICES IN-PERSON COED OFFICE HOURS

Our designated pre- and post-award staff from the Office of Research Services now offer in-person office hours in the Cato College of Education. Specifically, Catherine Butt (Post-award Specialist) and Caroline Kennedy (Pre-award Specialist) are available one day each week in Room 150C, located in the Business Office Suite on the main floor in Mebane Hall.

The goal of this initiative is to provide faculty with easier access to support for proposal development and award management, and to further strengthen the grant support available to the College.

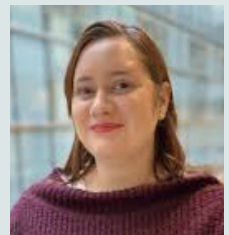
To schedule a meeting with Catherine or Caroline, please click on this [link](#) for the in-person research administration meeting sign-up sheet. The link will be included in each issue of the Graduate Record in the section that provides the contact information for our Research/Funding Support team.

Pre-Award Support: Caroline Kennedy, Tuesdays from 10:00 a.m.-12:00 p.m.

Post-Award Support: Catherine Butt, Thursdays from 9:00 a.m.-12:00 p.m.



CAROLINE KENNEDY



CATHERINE BUTT

## NC ALPHA DELTA KAPPA PAST STATE PRESIDENTS SCHOLARSHIP

The Zeta Chapter of North Carolina Alpha Delta Kappa, an organization for women educators, is now accepting applications for the North Carolina Alpha Delta Kappa Past State Presidents Scholarship. This \$2,000 scholarship is awarded annually to rising juniors, seniors, or graduate students majoring in education. Applications are available online and must be submitted by March 1st. Students are encouraged to take advantage of this opportunity and apply [here](#). Any questions should be directed to Jamie Reinsch, Scholarship Chairman, at [parrothd@comporium.net](mailto:parrothd@comporium.net).

If you have any questions do not hesitate to contact me.

## METHODOLOGICAL & DATA ANALYTIC SUPPORT

The Center for Educational Measurement and Evaluation (CEME) in the Cato College of Education provides statistical support and research methodological assistance to faculty, staff, and graduate students at UNC Charlotte. To receive CEME support, please submit a [service request ticket](#).



The Cato College of Education at UNC Charlotte wants to help **you** succeed on the Praxis II and other licensure tests.

We are offering a series of free study workshops virtually via Zoom from early February through April. The dates of the specific workshops that will be offered are indicated below.

Please email [trecuitment@charlotte.edu](mailto:trecuitment@charlotte.edu) with any related questions.

To attend any of the workshops, please complete the online registration form via the link below. Once you have submitted the form, you should immediately receive email confirmation.

This email will include links to all of the online Zoom workshops. Please make note of the link(s) for the workshop(s) that you plan to attend, as you may not receive an individual invitation from the presenter.

**Sign up via our Google Form:**  
<https://forms.gle/Z3Ymy8AfH7f2xwAz5>

TOPIC	PRESENTERS	DATE & TIME
Foundations of Reading	Alicia Kitten & Jean Vintinner	Thursday, 4/2, 5:00-8:00 p.m.
Praxis Elementary Math CKT (7813)	Allison Elowson	Wednesday, 3/25, 5:00-8:00 p.m.
SPED General Curriculum (5543)	Shannon Pardue	Thursday, 2/26, 6:00-9:00 p.m.
MDLG (5440 or 5442) and Secondary (5435) Comprehensive Science	Regina McCurdy	Wednesday, 4/8, 6:00-9:00 p.m.
SPED Adapted Curriculum (5545)	Hannah Douglass	Tuesday, 4/14, 5:00-8:00 p.m.
Praxis - Middle Grades Math	Allison Elowson	Wednesday, 4/1, 5:00-8:00 p.m.
Praxis - Secondary Math	Allison Elowson	Wednesday, 4/15, 5:00-8:00 p.m.
Middle Grades & Secondary English Language Arts	Adam Myers	Wednesday, 3/25, 5:30-8:30 p.m.
Middle School (5089) and High School (5081/5581) Social Studies.	Oscar Larsen	Wednesday, 3/25, 6:00-9:00 p.m.
English as a Second Language (5362)	Cornelia Okraski	Wednesday, 4/22, 6:00-9:00 p.m.
CTE (Business/IT (5101) Marketing (5561))	Nakesha Dawson	Wednesday, 3/18, 6:00-9:00 p.m.
Praxis Core Math (5733)	Tynaiza Murphy	Wednesday, 2/11, 6:00-7:30 p.m.
Praxis Core Reading (5713)	Phillip Pope	Tuesday, 2/3, 6:00-7:30 p.m.
Praxis Core Writing (5723)	Phillip Pope	Monday, 2/2, 6:00-7:30 p.m.
Instructional Coaching	Kate Gilbert	Saturday, 2/28, 10:00am-12:00pm

## CATO COLLEGE OF EDUCATION RESEARCH SYMPOSIUM

All Cato College of Education students (undergraduate and graduate) are encouraged to submit a proposal to present their research at the 7th Annual Cato College of Education Research Symposium. This year's symposium will take place in the Student Union (Salons A-C) on April 2 from 3:30-5:00 p.m. Presenters will participate in 20-minute poster presentation rounds, offering time both to share their work and to engage with fellow presenters.

The symposium aims to highlight and support graduate and undergraduate research at all stages of completion, increase visibility of student research interests, encourage collaboration between faculty and students, enhance faculty involvement on dissertation committees, and provide valuable mentoring opportunities. Faculty members are also welcome to present with their students.

Presenters will benefit from the opportunity to add a line to their CV, practice presenting ahead of spring and summer conferences, refine their research and communication skills, and potentially earn one of several \$500 awards to support conference travel or other professional development. The event also provides a meaningful chance to celebrate research achievements and network with colleagues over refreshments. Participation is free. The Dean's Office will coordinate and cover the cost of printing posters on foam boards.

Please note that this symposium is separate from the Graduate Research Symposium hosted by the Graduate School on April 6. Students presenting at the Graduate Research Symposium (April 6) or the Undergraduate Research Conference (April 24) are encouraged to also present their work at the COED Research Symposium on April 2.

To submit a proposal, click [here](#) and complete the brief submission form by February 6, 2026. Acceptance notifications will be sent by February 13, along with access to a blank PowerPoint poster template. Completed posters must be emailed to Maddison Ingram ([mingra17@charlotte.edu](mailto:mingra17@charlotte.edu)) by March 13, 2026, to allow FEDEX sufficient time for printing. Additional instructions regarding poster pickup will be provided upon acceptance. For questions, please contact Dr. Scott Kissau at [spkissau@charlotte.edu](mailto:spkissau@charlotte.edu).



# CATO COLLEGE OF EDUCATION RESEARCH SYMPOSIUM

## SUBMISSIONS AND REGISTRATION ARE NOW OPEN



SUBMISSIONS

Proposals due by Feb 6  
Notification by Feb 13

Posters printed by Dean's Office at no  
charge - due Mar 13, ready by Mar 30

# APRIL 2

3:30-5 PM | Student Union 340 A-C

FREE ENTRY FOR ALL EDUCATION STUDENTS

REFRESHMENTS | AWARDS

Email [spkissau@charlotte.edu](mailto:spkissau@charlotte.edu) with questions



Consider using Mursion software in your classes this spring (2026). Our subscription provides access to both ready-to-use (whole class) 50-minute simulation sessions and 30-minute (individual student) practice simulation sessions that address a lot of skills relevant not only to teacher preparation programs, but also educational leadership and counseling (see above Library of Sessions). To schedule a session, [please complete the sign-up form here](#). Maddison will schedule your session and send you the link to share with your students.

Educational Leadership	Middle School	High School	ELED & ECE	Special Populations	Counseling
<ul style="list-style-type: none"> <li>Principal-Teacher Conference</li> <li>Family Conference - ECE Behavioral Issues</li> <li>Family Conference – ECE Data</li> <li>Family Conference – K-5 Data</li> <li>Family Conference – Middle School Data</li> <li>Family Conference – Middle School Behavioral Issues</li> <li>Family Conference – Concerns with IEP</li> <li>Family Conference – Introducing Need for IEP</li> </ul>	<ul style="list-style-type: none"> <li>Establishing Rapport (Meet &amp; Greet)</li> <li>Classroom Management</li> <li>Introducing Content</li> <li>Eliciting Student Thinking</li> <li>Comprehending Personification</li> <li>Understanding Exponents</li> <li>Welcoming a New Student</li> <li>Defining Science Vocabulary</li> <li>Understanding Angles</li> <li>Understanding Instructions</li> <li>Comprehending Nonfiction Vocabulary</li> <li>Social Emotional Learning</li> </ul>	<ul style="list-style-type: none"> <li>Meet and Greet</li> <li>Classroom Management, Setting Expectations</li> <li>Introducing Content</li> <li>Demonstrating Science Lab Safety</li> <li>Establishing Science Lab Safety</li> <li>Eliciting Student Thinking,</li> <li>Environmental Sciences</li> <li>Leading Group Discussion, Biology</li> </ul>	<ul style="list-style-type: none"> <li>Establishing Rapport (Meet &amp; Greet)</li> <li>Classroom Management</li> <li>Introducing Content</li> <li>Eliciting Student Thinking – Long Division</li> <li>Social Emotional Learning</li> <li>Leading a Morning Circle</li> <li>Read Aloud</li> <li>Assessing Phonetic Awareness</li> </ul>	<ul style="list-style-type: none"> <li>Understanding Exponents (ASD)</li> <li>Comprehending Personification (ASD)</li> <li>Comprehending Nonfiction Vocabulary (LD)</li> <li>Understanding Instructions (LD)</li> <li>Welcoming a New Student (EL)</li> <li>Defining Science Vocabulary (EL)</li> <li>Understanding Angles (EL)</li> </ul>	<ul style="list-style-type: none"> <li>Conducting a Counseling Session</li> <li>Checking-in New Patient Behavioral Health</li> <li>Interviewing Pediatric Guardian</li> <li>Delivering News to a Minor</li> </ul>

## RESEARCH/FUNDING SUPPORT

### Finding Funding Opportunities

Kailey Hess, Limited Submissions and Internal Funding Coordinator, Research Development Office

[Khess10@charlotte.edu](mailto:Khess10@charlotte.edu)

### Proposal Development & Submission

Caroline Kennedy, Proposal Development Officer, Office of Research Services

[cekenned@charlotte.edu](mailto:cekenned@charlotte.edu)

### Post-award Support

Catherine Butt, Award Management Specialist, Office of Research Services  
[cbutt@charlotte.edu](mailto:cbutt@charlotte.edu)

Jennifer Jones, Business Services Coordinator

[Jennifer.Jones@charlotte.edu](mailto:Jennifer.Jones@charlotte.edu)

### IRB Questions

Cat Runden, Research & Economic Development

[CatRunden@charlotte.edu](mailto:CatRunden@charlotte.edu)

To schedule an in-person meeting in Mebane Hall (150C) meeting with Caroline or Catherine, click on this [link](#) for the sign-up sheet.

## GERMAN-AMERICAN VIRTUAL DOCTORAL RESEARCH SYMPOSIUM

The Cato College of Education at UNC Charlotte and the University of Education, Ludwigsburg (Germany) share a longstanding international research partnership that includes an annual German-American Research Symposium, alternating between the two countries.

In 2025, this partnership expanded to include doctoral candidates through the inaugural German-American Doctoral Candidate Virtual Research Symposium. Thirty-one doctoral students (18 from the U.S. and 13 from Germany) participated, reporting improved research and presentation skills, refined research ideas, and new international collaborations. Participants also valued the virtual format as an accessible and supportive space for sharing work and receiving feedback.

Building on this success, the two institutions are pleased to announce the 2nd Annual German-American Doctoral Candidate Virtual Research Symposium, to be held April 21-24. The symposium provides doctoral students the opportunity to share research, gain presentation experience, receive feedback, learn about others' work, and foster international research collaborations.

Participation includes submitting a 2-3-minute narrated research poster (PowerPoint slide), reviewing posters, engaging in discussion, and providing feedback. The symposium will also feature a virtual meet-and-greet on April 20 and breakout room discussions on April 29.

An optional Zoom information session will be held on February 10, 2026, from 12-1 p.m. Past participants will share their experiences. Please RSVP [here](#) if you plan to attend; a calendar invitation and Zoom link will be sent to registrants. Additional support will be provided, including guidance on poster design, narrated poster creation, sample posters, and submission instructions.

If you are interested in sharing your research internationally, learning from doctoral peers in another country, honing your presentation skills, developing new research partnerships, and adding an international presentation to your vita, please complete this brief proposal [form](#) by February 27. Additional details will be sent to all respondents. Completed narrated posters will be due by April 13 and uploaded to a shared Google Drive folder.



## GERMAN-AMERICAN VIRTUAL DOCTORAL SYMPOSIUM

**INFO SESSION  
AND PROPOSALS  
NOW OPEN**



INFO SESSION



PROPOSALS

**Info Session Feb 10  
Proposals Due Feb 27**

Email [spkissau@charlotte.edu](mailto:spkissau@charlotte.edu),  
[bianca.roters@ph-ludwigsburg.de](mailto:bianca.roters@ph-ludwigsburg.de), or  
[anni.lenz@ph-ludwigsburg.de](mailto:anni.lenz@ph-ludwigsburg.de)  
with any questions

# APRIL 21-24

## ONLINE EXPERIENCE

WITH PARTICIPANT MEET & GREET APRIL 20

SHARE RESEARCH | BUILD PRESENTATION EXPERIENCE  
RECEIVE FEEDBACK | MAKE INTERNATIONAL CONNECTIONS



## MEBANE EARLY LITERACY SUMMIT

The Mebane Early Literacy Summit will take place on Saturday, February 28, 2026 from 8:00-4:00 in the Popp Martin Student Union of UNC Charlotte. Session content will be aligned with the science of reading and designed for classroom teachers, families, and literacy leaders in schools and the community. Sessions will be led by literacy leaders in North Carolina and beyond including North Carolina Spangler and Goodnight Distinguished Professors of Early Child Literacy. Additionally, participants can earn Continuing Education Credits (CEUs) for teacher licensure. This year's Keynote Speaker is literacy leader, author, and researcher, Dr. Holly Lane, Director of the University of Florida Literacy Institute. Her research focuses on effective reading instruction and intervention and helping teachers develop the knowledge and skills they need to teach reading effectively, especially using evidence-based practices to promote the development of foundational reading skills. Please register for the summit by February 13, 2026 using this [form](#). Registration is free, includes light breakfast and lunch, and is limited to 400 participants. All presenters must also register.



Presents the:

## Mebane Early Literacy Summit

### Elevating Evidence-Based Practices in Literacy

The Mebane Early Literacy Summit provides FREE research-based professional learning that bridges early literacy research and classroom practice while strengthening partnerships among educators and community organizations supporting literacy.



**Saturday, February 28**  
8AM-4PM



**Popp-Martin Student Union**  
UNC Charlotte



Educators, coaches/specialists, school/district leaders, faculty/students, community members, and more

#### IN PARTNERSHIP:

**Center for Adolescent Literacy**  
Secondary literacy strand

**SW RESA Literacy Summit**

Back to back summits for educators in SW region



KEYNOTE SPEAKER

**Dr. Holly Lane**

Director of UFLI

#### FULL DAY OF



Learning Sessions



Invited Sessions



Community Partners



Poster Reception

**REGISTER HERE**



**MEBANE  
EARLY LITERACY  
SUMMIT**

<https://education.charlotte.edu/melc/>

Have content related to graduate education, research, or grant writing that you would like to share with COED faculty and staff in a future issue? Please contact Scott Kissau: [spkissau@charlotte.edu](mailto:spkissau@charlotte.edu).



## FUNDING OPPORTUNITIES

**Alpha Delta Kappa, the International Honorary Sorority for Women Educators - Future Educator Scholarship** - Supports Alpha Delta Kappa Collegiate Club members pursuing careers in education-related fields, including teaching, counseling, therapy, social work, and instructional technology. Aimed at fostering professional development, the scholarship assists with tuition, living expenses, and materials during the final two years of study. **Deadline: 01 Mar 2026.**

**American Psychological Foundation - Springfield Research Fund Dissertation Fellowship** - The Springfield Research Fund Dissertation Fellowship supports graduate students at any stage of their dissertation who are interested in researching contemporary LGBTQIA+ issues in an effort to dispel stereotypes and other negative information that leads to prejudice and discrimination. One fellowship of up to \$10,000 is available. Successful applicants will also be eligible for a \$1,000 bonus upon publication of their dissertation research. **Deadline: 12 June 2026.**

**Association of Teacher Educators - Robert F. Schuck Distinguished Research in Teacher Education Award** - The award has been established to recognize and promote exceptional research that substantially contributes to the improvement of teacher education. The Association of Teacher Educators presents this award in anticipation that such recognition will stimulate research to: (1) further the development of teacher education; (2) disseminate related information nationally and internationally; and (3) expand the knowledge base relative to teacher education. **Deadline: 15 May 2026.**

**Brady Foundation - Existing Educational Program Evaluation Grants** - The Foundation is currently accepting Existing Program Evaluation (EPE) proposals that have the potential to provide data that will inform how to address disparities in educational opportunities associated with race, ethnicity, and family income. The primary aim must concern evaluating the effectiveness of programs designed to promote positive cognitive and/or achievement outcomes for children (birth through 18 years) with the goal of informing ways to close the educational opportunity gaps associated with race, ethnicity, and income.

**Deadline: Stage 1 Applications are accepted throughout the year. If Invited to Continue, Stage 2 Proposal Due Dates are listed on the funder website.**

**Burroughs Wellcome Fund** - The Burroughs Wellcome Fund aims to stimulate growth of new connections between thinkers working in largely disconnected fields who might together change the course of climate change's impact on human health. In the three years between Fall 2023 and Summer 2026, we will dedicate \$1M to supporting small, early-stage grants of \$2,500-\$50,000 toward achieving this goal.

**Deadline: Quarterly through July 2026 (Next: 4/23/26, 7/23/26).**

**Caplan Foundation** - The Caplan Foundation for Early Childhood is an incubator of promising research and development projects that appear likely to improve the welfare of young children, from infancy through 7 years, in the United States. The Foundation's goal is to provide seed money to implement those imaginative proposals that exhibit the greatest chance of improving the lives of young children, on a national scale. The Foundation provides funding in the following areas: 1) Early Childhood Welfare; 2) Early Childhood Education and Play; 3) Parenting Education.

**Deadline: 31 May 2026 (Letter of Inquiry).**

**German Academic Foundation** - The German Academic Scholarship Foundation invites applications for its doctoral scholarships. These support doctoral candidates studying at a German university and German citizens pursuing a PhD abroad. An average of 350 scholarships are awarded each year. Doctoral scholars receive €1,450 a month, comprising a basic monthly stipend of €1,350 and a research allowance of €100 a month. Doctoral scholars who travel abroad for

CONTINUED ON NEXT PAGE. ►►



research purposes, laboratory visits or to attend conferences can apply for grants for travel and additional living expenses. Funding is initially granted for two years. On application and subject to successful progress, the scholarship may be extended twice, for up to six months respectively. The maximum funding period is 36 months, for scholarship holders with children this period can be increased to 48 months. **Deadline: Applications may be submitted at any time.**

**Learning Disabilities Foundation of America** - Applications must be for projects which conform to the mission of the Learning Disabilities Foundation of America by responding to an unmet need in the field of learning disabilities. Funds are granted for charitable, scientific, literary or educational purposes or for the identification, ongoing evaluation, education of and services for children and adults with learning disabilities. **Letter of Inquiry Deadline: 06 Apr 2026.**

**National Science Foundation - Computer Science for All (CSforALL)** - CSforALL aims to provide (1) high school teachers with the preparation, professional development (PD) and ongoing support they need to teach rigorous computer science courses; (2) preK-8 teachers with the instructional materials and preparation they need to integrate CS and CT into their teaching; and (3) schools and districts with the resources needed to define and evaluate multi-grade pathways in CS and CT.

**Deadline: Feb 11, 2026.**

**National Science Foundation - EHR Core Research (ECR): Building Capacity in STEM Education Research (ECR: BCSER)** - ECR: BCSER supports projects that build investigators' capacity to carry out high-quality STEM education research that will enhance the nation's STEM education enterprise. In addition, ECR: BCSER seeks to broaden the pool of researchers who can advance knowledge regarding STEM learning and learning environments, broadening participation in STEM fields, and STEM workforce development. Specifically, ECR: BCSER supports activities that enable researchers to expand their areas of expertise and acquire the requisite knowledge and skills to conduct rigorous research in STEM education. Career development may be accomplished through investigator-initiated professional development and research projects or through institutes that enable researchers to integrate methodological strategies with theoretical and practical issues in STEM education. **Deadline: 27 Feb 2026.**

**National Science Foundation - Growing Research Access for Nationally Transformative Equity and Diversity (GRANTED)** - The National Science Foundation (NSF) seeks to encourage nationally transformative ideas and scalable models to strengthen the Nation's research enterprise, particularly at emerging research and minority-serving institutions. Broadly defined, the research enterprise includes human capital, practices and processes related to research development, research administration, technology transfer and commercialization, corporate relation/public-private partnerships, research integrity, compliance and security, research policy, student research training, and research leadership.

**Deadline: You can apply for this opportunity at any time.**

**National Science Foundation - NSF K-12 STEM** - The program encourages innovative, multidisciplinary, and potentially transformative projects that build theory, generate new knowledge, and inform education practices in a rapidly evolving technological landscape with advances in emerging technologies including artificial intelligence (AI). It supports fundamental, applied, and translational research that enhances STEM teaching and learning and across the human lifespan and in a range of formal and informal learning settings. In addition to building theory and informing practice, the program seeks projects that produce new tools and frameworks; harness exemplary formal and informal learning; and unlock new avenues of scientific inquiry and discovery in STEM education to strengthen the Nation's standing as a global leader in STEM innovation. Proposals submitted to the STEM K-12 program may focus on learning or instruction in any field(s) of STEM (science, technology, engineering, or mathematics) and may involve a variety of contexts in which teaching and learning take place, including formal education (pre-K to 12) and informal learning environments. **Deadline: Proposals accepted anytime.**

**National Science Foundation - Research Coordination Networks (RCN)** - The goal of the RCN program is to advance a field or create new directions in research or education by supporting groups of investigators to communicate and coordinate their research, training and educational activities across disciplinary, organizational, geographic, and international boundaries. The

CONTINUED ON NEXT PAGE. ►►

RCN program provides opportunities to foster new collaborations, including international partnerships where appropriate, and address interdisciplinary topics. Innovative ideas for implementing novel networking strategies, collaborative technologies, training, broadening participation, and development of community standards for data and meta- data are especially encouraged. RCN awards are not meant to support existing networks; nor are they meant to support the activities of established collaborations. **Deadline: Proposals are accepted at any time.**

**PNC Foundation - PNC Grow Up Great Foundation Grants** - The PNC Foundation supports a variety of nonprofit organizations with a special emphasis on those that work to achieve sustainability and touch a diverse population, in particular, those that support early childhood education and/or economic development. PNC Grow Up Great is our signature program. It is a multi-year, bilingual initiative that began in 2004 to help prepare children from birth to age 5 for success in school and life.

**Deadline: You can apply for this opportunity at any time.**

**Robert Wood Johnson Foundation - Evidence for Action: Innovative Research to Advance Racial Equity** - Evidence for Action prioritizes research to evaluate specific interventions (e.g., policies, programs, practices) that have the potential to counteract the harms of structural and systemic racism and improve health, well-being, and equity outcomes. We are concerned both with the direct impacts of structural racism on the health and well-being of people and communities of color (e.g., Black, Latina/o/x, Indigenous, Asian, Pacific Islander people, and other races and ethnicities)—as well as the ways in which racism intersects with other forms of marginalization, such as having low income, being an immigrant, having a disability, or identifying as LGBTQ+ or a gender minority. **Deadline: Continuous.**

**Teagle Foundation - Education for American Civic Life** - The Education for American Civic Life initiative supports efforts to prepare students to become informed and engaged participants in the civic life of their local and national communities. Grants of varying amounts, ranging from \$100,000-\$300,000 over a 24-36-month period, will be made to each funded project participating in this initiative. **Deadline: Continuous.**

**The Stranahan Foundation - Early Childhood Education Program** - The program aims to improve access to high-quality early care and education for young children, particularly those from low-income families. We do this by investing in the development and retention of a high-quality, thriving early educator workforce. The spring 2026 funding cycle will support nonprofit organizations and projects that align with our Innovation and Proven Professional Development (PD) strategies. These strategies specifically fund professional development organizations, early childhood networks, institutions of higher education, and local and state early childhood departments that are designing and/or implementing larger-scale models (at 5+ early childhood programs). This call is open to U.S. nonprofit organizations, including fiscally sponsored groups, public school districts, and colleges that provide professional development to five or more early childhood providers or programs. **Deadline: 03 Dec 2026 (Letter of Inquiry).**

**U.S. Department of State - Fulbright Specialist Program** - The Fulbright Specialist Program, part of the larger Fulbright Program, was established in 2001 by the U.S. Department of State, Bureau of Educational and Cultural Affairs. The program pairs highly qualified U.S. academics and professionals with institutions abroad to share their expertise, strengthen institutional linkages, hone their skills, gain international experience, and learn about other cultures while building capacity at receiving institutions. The Fulbright Specialist Program aims to provide a short-term, on-demand resource to foreign institutions, giving them greater flexibility in how they participate with Fulbright. Specialists are strongly encouraged to continue to work with these institutions in the years following their initial exchange, creating opportunities for ongoing cooperation and consultancies.

**Deadline: 06 Mar 2026; 08 May 2026.**

For a more comprehensive list of funding opportunities that align with areas of research interest and expertise in the Cato College of Education, please visit the curated list created in Pivot at the link provided below. You may be prompted to log in to Pivot to access these results. If you do not have a Pivot account set up, you can use your UNC Charlotte NinerNet credentials as the shibboleth login when prompted. [https://pivot.proquest.com/curated\\_opps/9932](https://pivot.proquest.com/curated_opps/9932)